

# Install and Register the Client

## Prerequisites

### A. Operating System:

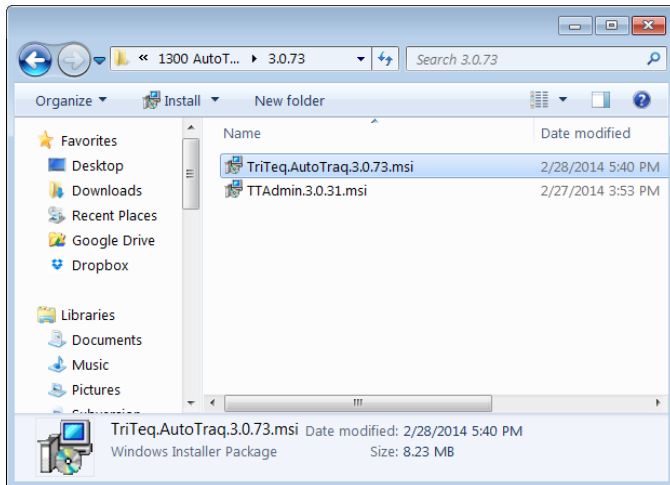
- Windows XP, Windows 7 or Windows 7 Professional or Enterprise Editions
- .NET Framework version 4 - Full Profile (not only client profile).
- Most recent patches/updates from Microsoft for the .NET Framework are installed (including KB2468871).Net Framework 4.0 Extended Client.

### B. USB or Serial Cradle

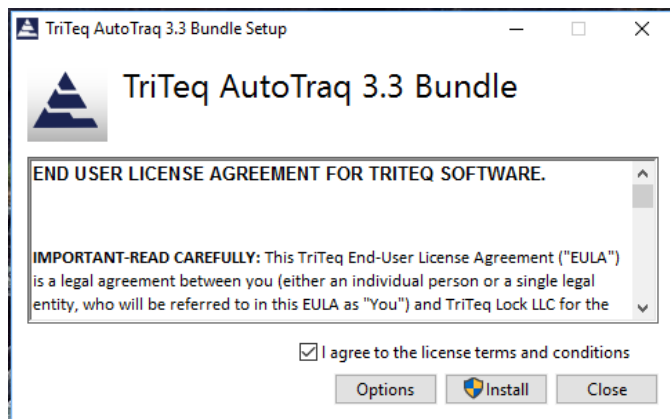
### C. Connection to TriTeq Registration Server (optional)

Although this is optional, connection to our registration server is highly recommended as it will speed the registration process and eliminate errors. The "Network Tester" software can be downloaded from the TriTeq website and the firewall can be configured to allow access. After registration is complete, the connection can be severed, and the firewall can be restored to the prior settings.

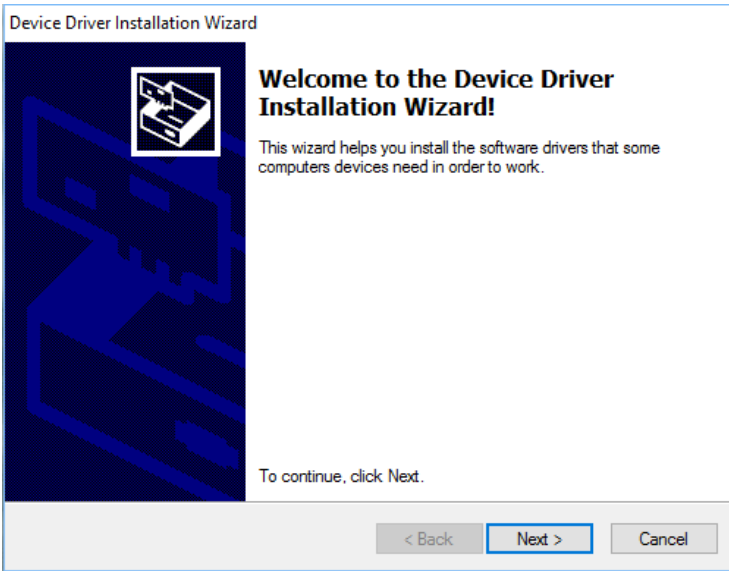
## Installation



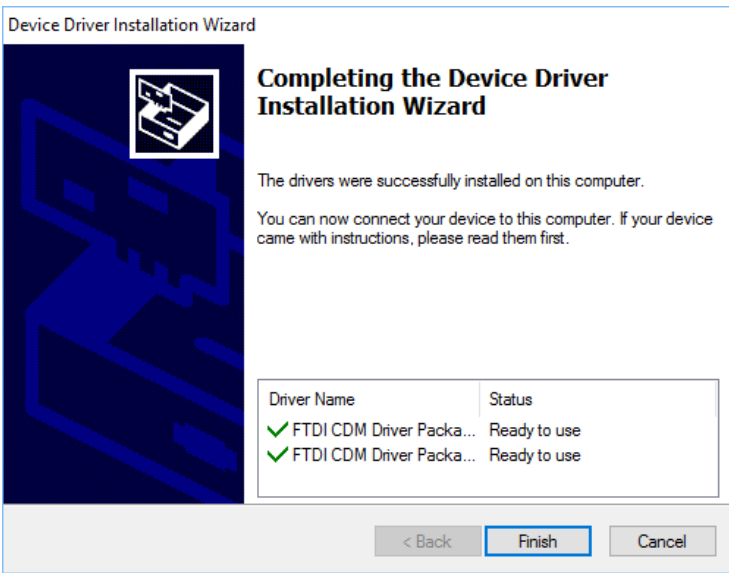
Run the file named *TriTeq.AutoTraq.3.x.xx.msi*



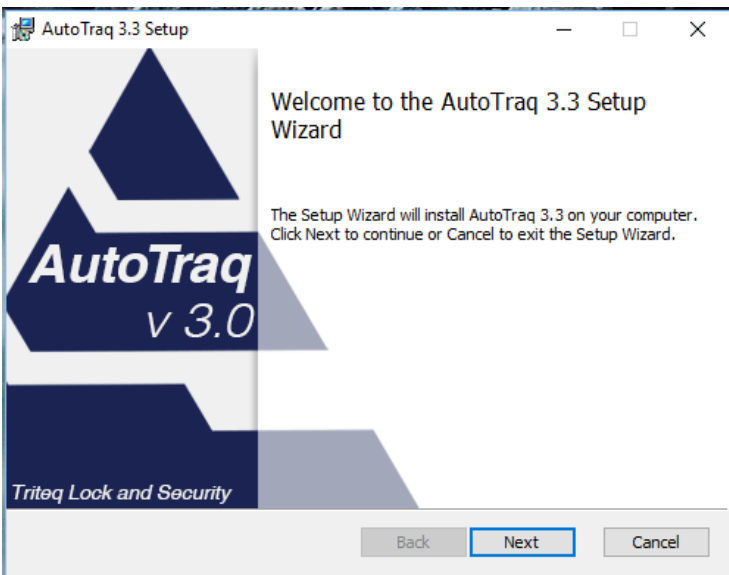
If you accept the license agreement select the checkbox and choose **Install**.



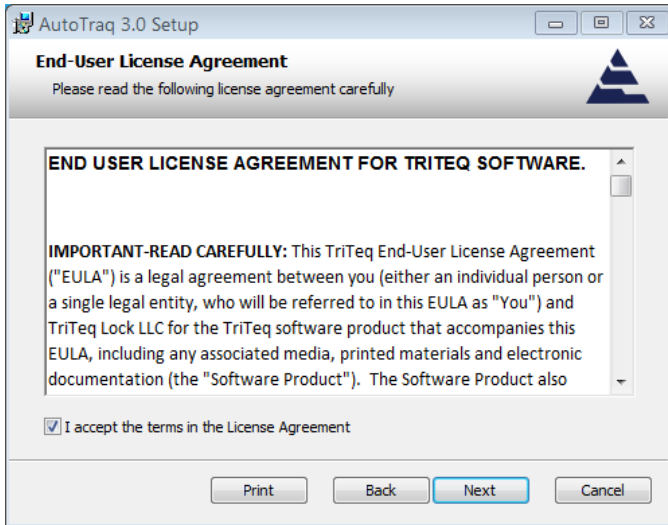
To install the **Cradle drivers** click next.



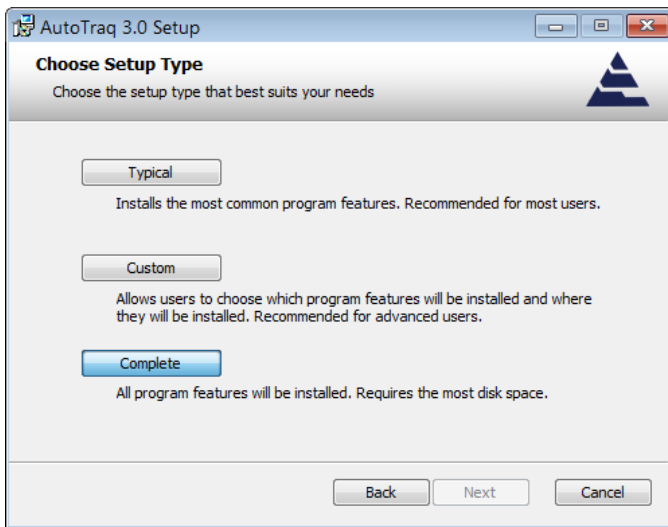
Complete the drivers installation and select **Finish**.



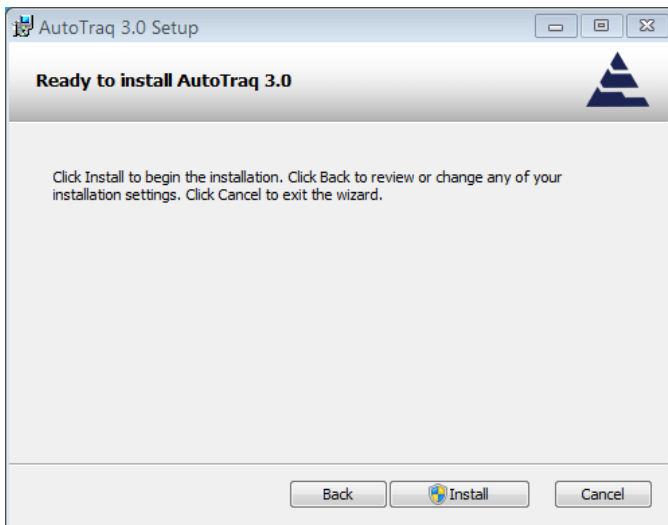
At the software installation welcome screen, click **Next** to continue installation process.



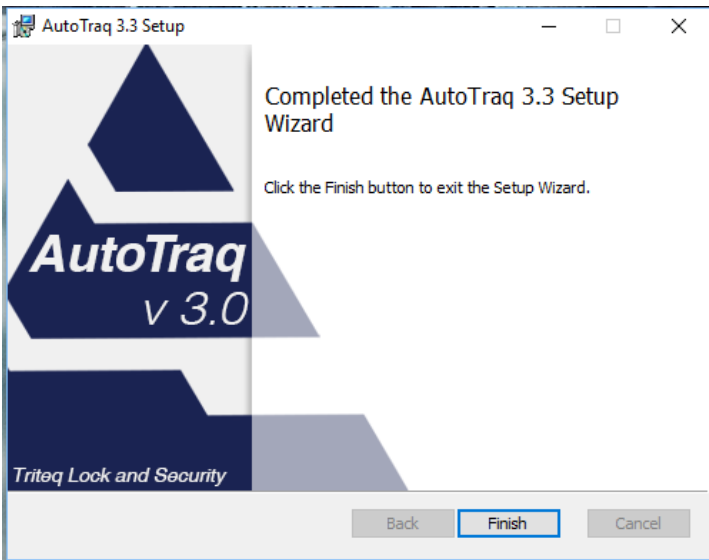
Read the "License Agreement". If you accept the terms of the agreement, click **Next** to continue.



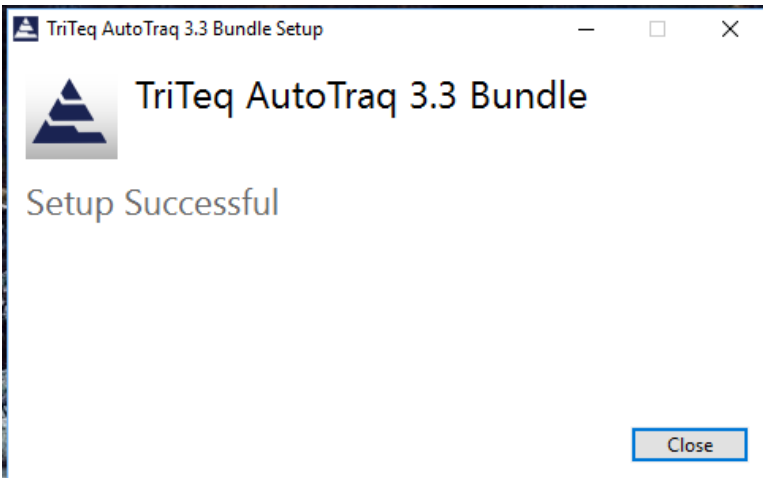
Select **Complete** to perform a full installation.



Click **Install** button to continue or **Cancel** to exit the installation.

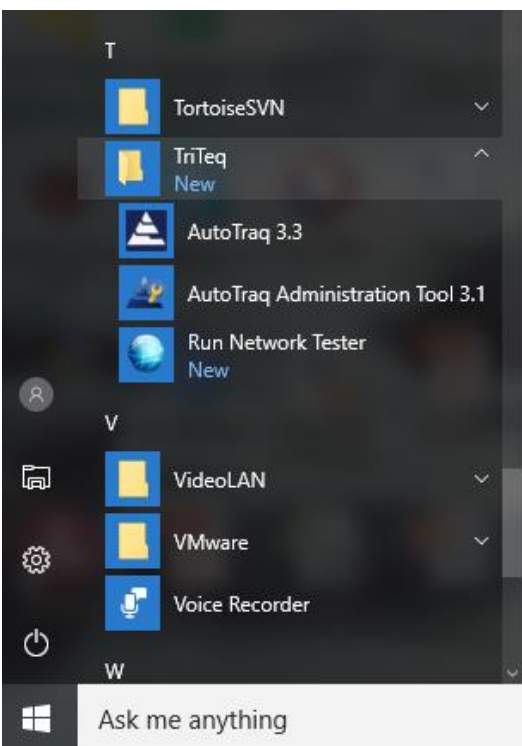


At the end of the software installation screen, click **Finish**

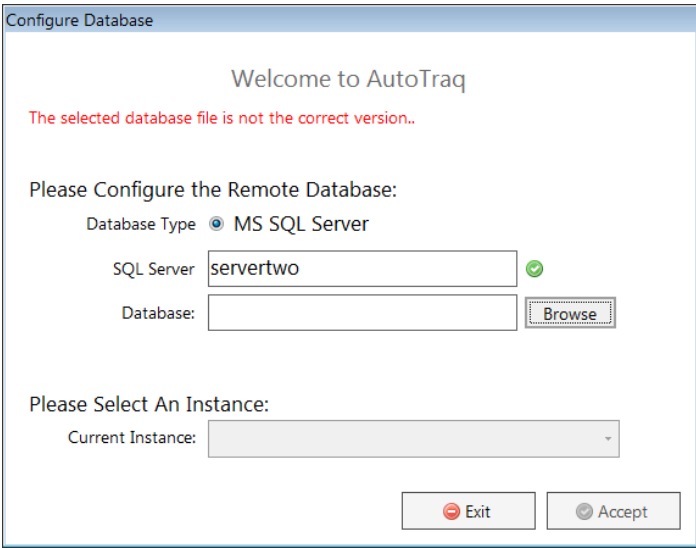


Your **AutoTraq** software is installed successfully on your computer.

## Connect to the Database

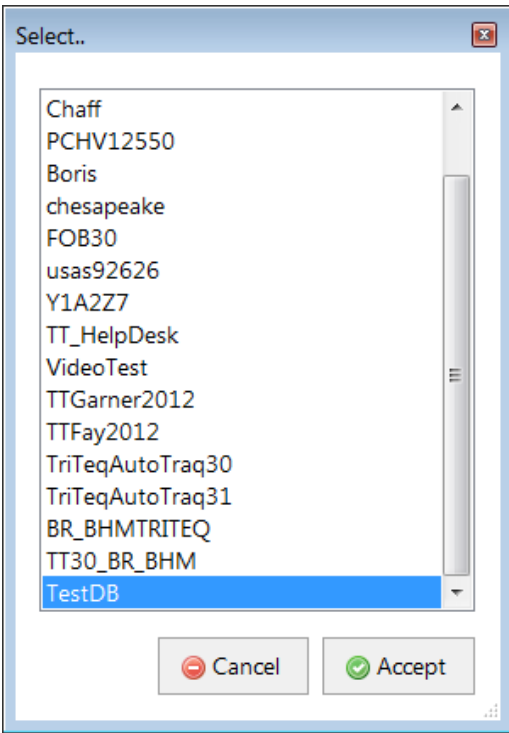


To open AutoTraq, locate the **TriTeq > AutoTraq** program folder and click on AutoTraq 3.0.

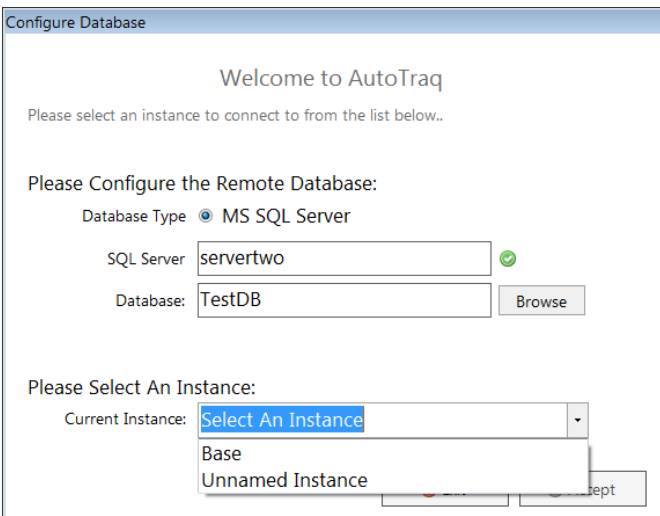


Enter your SQL server address.

Click the **Browse** button to find your database.



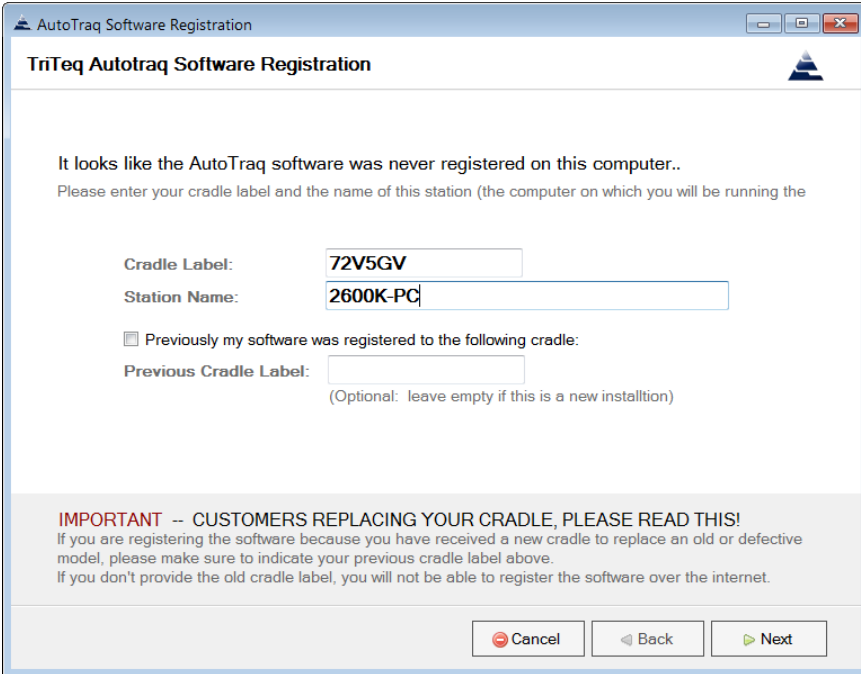
Select your database and click **Accept**.



Select your Instance and click **Accept**.

# Register the Software

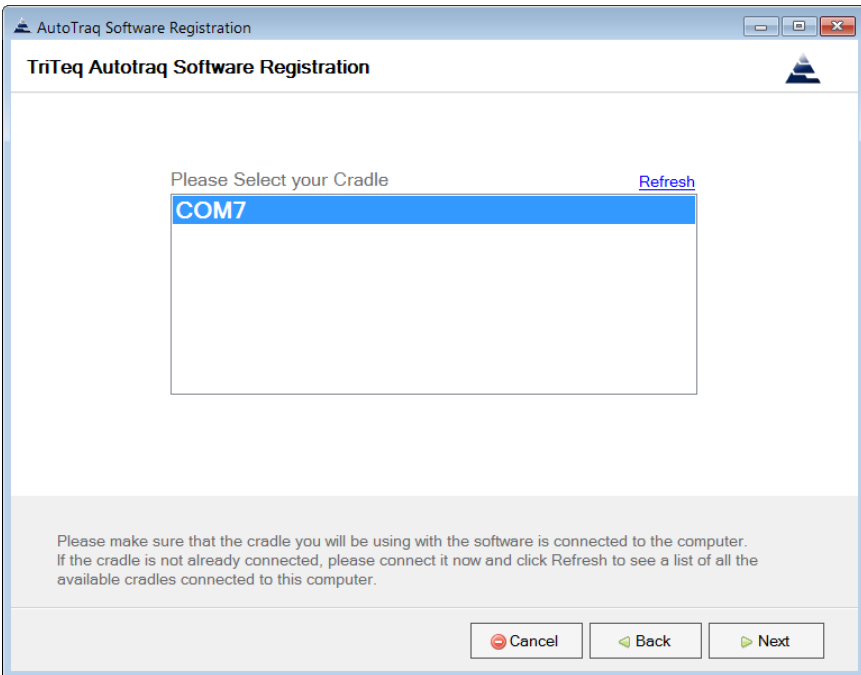
To start the registration process, enter the cradle label and station name.  
If your prior software was registered to a different cradle, specify the label from the old cradle.  
Click **Next** to proceed.



To start the registration process, enter the cradle label that you want to use and the station name.

If your software was registered to a different cradle in the past, please check that and enter the label of your previous cradle.

Click **Next**.



Select the connection port of the cradle.

AutoTraq Software Registration

### TriTeq Autotraq Software Registration

**Software Label**

**Customer Information**

Title   
 First Name   
 Last Name   
 Address   
 City   
 State  Zip   
 Country   
 Phone   
 Fax   
 Email

**Customer Type**

Customer Type   
 Corp. Hq. Zip   
 Corp. Hq. Name

Your information was retrieved from the license server. Please make sure the information is up to date. If you have a new software label please replace the one above before continuing!

Cradle Label: **72V5GV**  
 Station **2600K-PC**

If this is an upgrade your information should populate the screen with the information you supplied at the last time you registered. Make any edits necessary and click on **Next**. If you are a new user, enter the required information and click on **Next**.

AutoTraq Software Registration

### TriTeq Autotraq Software Registration

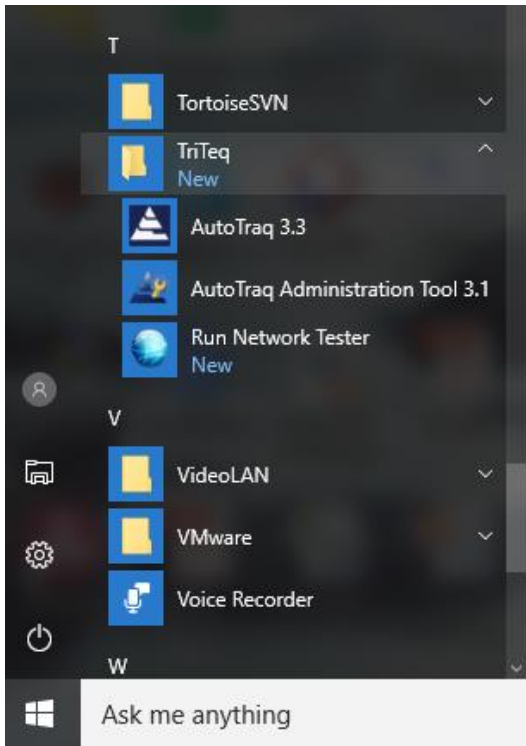
**AutoTraq was successfully registered!**

Please restart the software and log in to start using your copy of AutoTraq.

If the registration is completed successfully you will receive a message on your screen and an email will automatically be sent to the email address you provided.

To exit the registration window, click **Finish**.

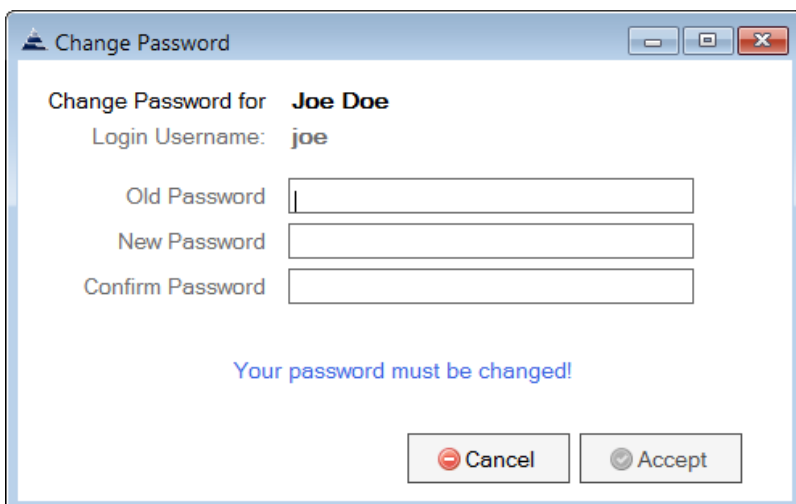
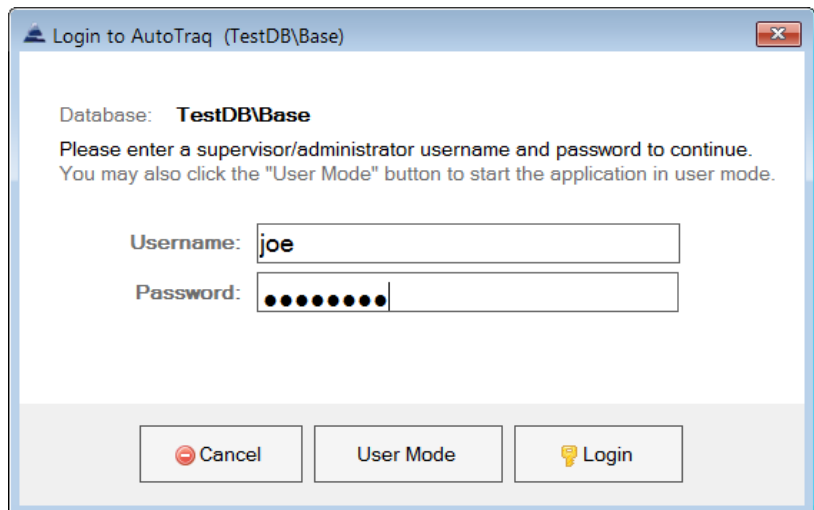
## Verify Login and Key Refresh



To run the software, open the **TriTeq** folder and click on **AutoTraQ**

To use the software as an authorized user, enter your username and password then click **Login**.

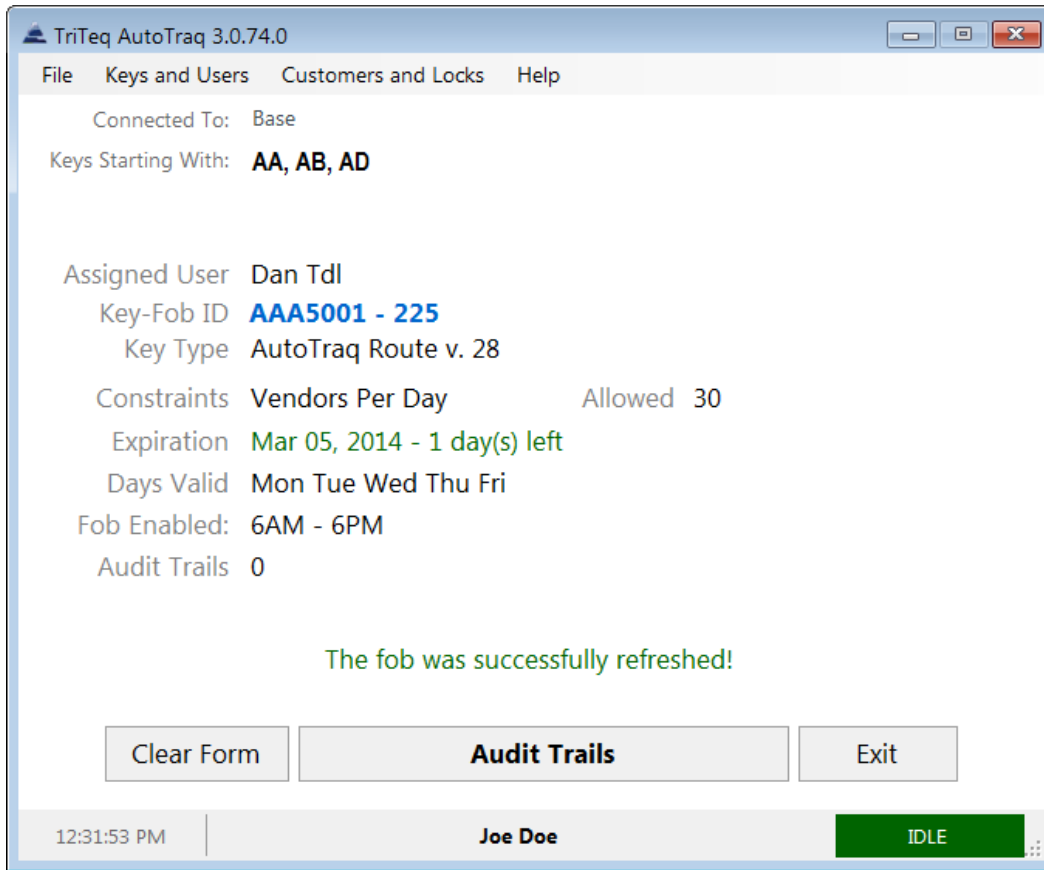
The system also allows you to use the software without logging in by clicking on **User Mode** button.



The first time an authorized user will logs in, the software will require a change of password.

After entering your old password you must choose a new password and click **Accept**.





To refresh an AutoTraq fob, place the fob in the cradle and press on the button.

The screen will refresh and the fobs information will be available.